

Umlaut - Ä / Ö / Ü

L\_\_we



Umlaut - Ä / Ö / Ü

K\_\_nig



Umlaut - Ä / Ö / Ü

K\_\_nguru



Umlaut - Ä / Ö / Ü

h\_\_ren



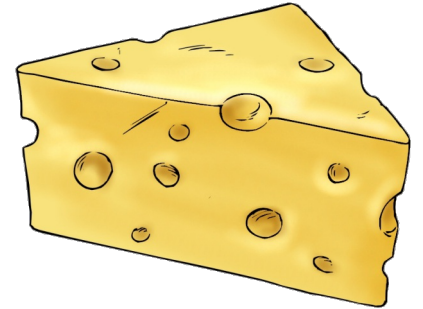
Umlaut - Ä / Ö / Ü

M\_\_tze



Umlaut - Ä / Ö / Ü

K\_\_se



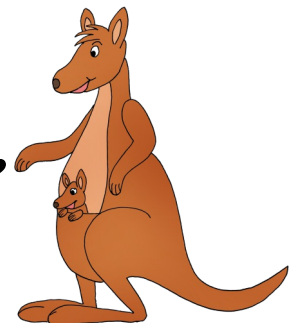
Umlaut - Ä / Ö / Ü

J\_\_ger



Umlaut - Ä / Ö / Ü

h\_\_pfen



Umlaut - Ä / Ö / Ü

Schl\_\_ssel



Umlaut - Ä / Ö / Ü

Sch\_\_ssel



Umlaut - Ä / Ö / Ü

M\_\_dchen



Umlaut - Ä / Ö / Ü

erz\_\_hlen



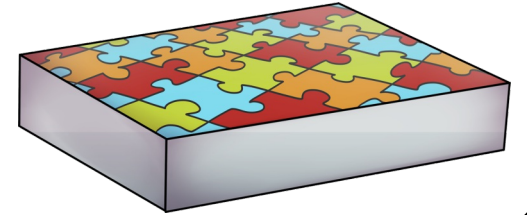
Umlaut - Ä / Ö / Ü

M\_\_rchen



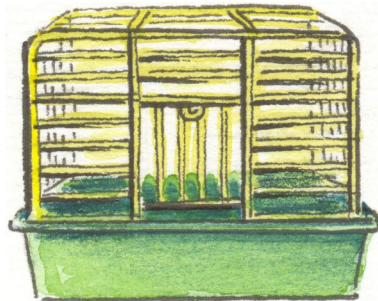
Umlaut - Ä / Ö / Ü

R\_\_tsel



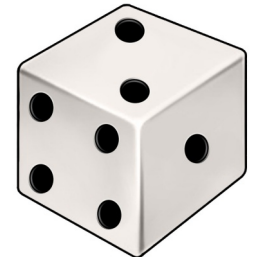
Umlaut - Ä / Ö / Ü

K\_\_fig



Umlaut - Ä / Ö / Ü

W\_\_rfel



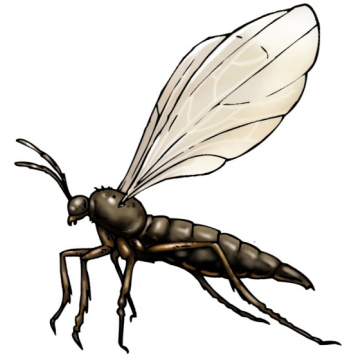
Umlaut - Ä / Ö / Ü

tr\_\_sten



Umlaut - Ä / Ö / Ü

M\_\_cke



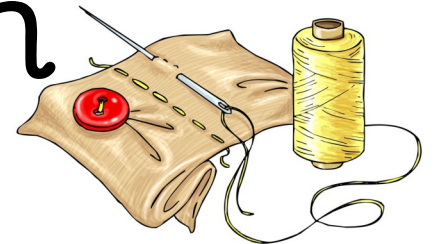
Umlaut - Ä / Ö / Ü

Sch\_\_ler



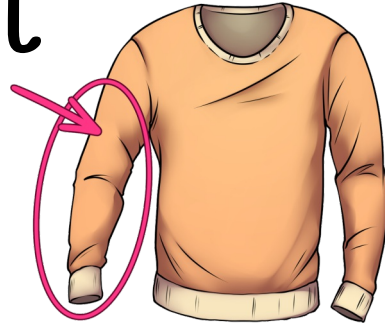
Umlaut - Ä / Ö / Ü

n\_\_hen



Umlaut - Ä / Ö / Ü

\_\_rmel



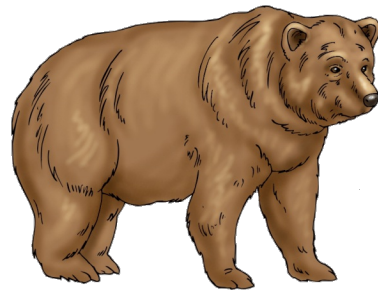
Umlaut - Ä / Ö / Ü

\_\_rgern



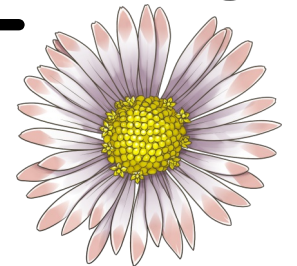
Umlaut - Ä / Ö / Ü

B\_\_r



Umlaut - Ä / Ö / Ü

G\_\_sebl\_\_chen



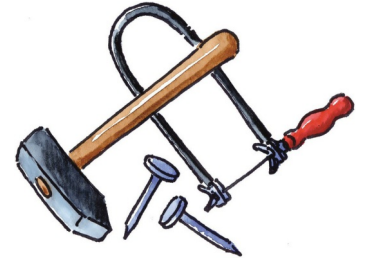
Umlaut - Ä / Ö / Ü

l\_\_cheln



Umlaut - Ä / Ö / Ü

S\_\_ge



Umlaut - Ä / Ö / Ü

W\_\_sche



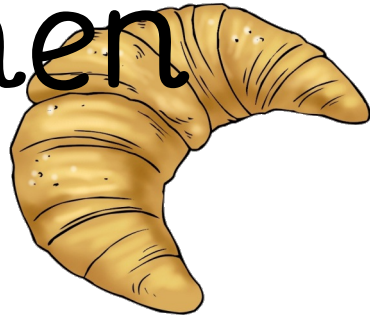
Umlaut - Ä / Ö / Ü

b\_\_se



Umlaut - Ä / Ö / Ü

H\_\_rnchen



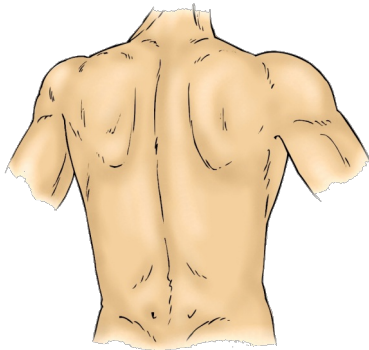
Umlaut - Ä / Ö / Ü

Eichh\_\_rnchen



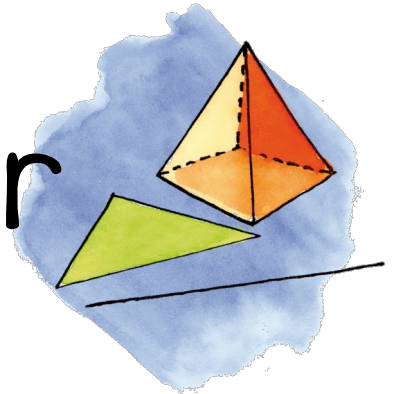
Umlaut - Ä / Ö / Ü

R\_\_cken



Umlaut - Ä / Ö / Ü

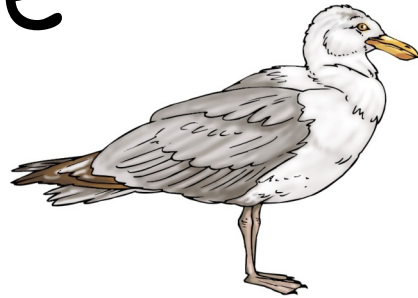
K\_\_rper





Umlaut - Ä / Ö / Ü

M\_\_we



Umlaut - Ä / Ö / Ü

M\_\_nch



Umlaut - Ä / Ö / Ü

M\_\_bel



Umlaut - Ä / Ö / Ü

h\_\_ren

Umlaut - Ä / Ö / Ü

B\_\_ffel



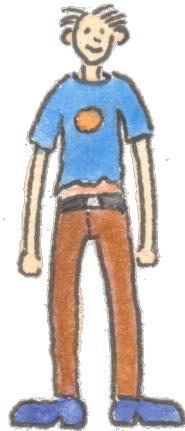
Umlaut - Ä / Ö / Ü

B\_\_ro



Umlaut - Ä / Ö / Ü

d\_\_nn



Umlaut - Ä / Ö / Ü

f\_\_nf



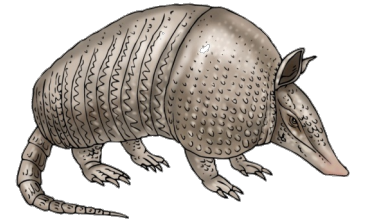
Umlaut - Ä / Ö / Ü

F\_\_ller



Umlaut - Ä / Ö / Ü

G\_\_rteltier



Umlaut - Ä / Ö / Ü

H\_\_tte



Umlaut

Ä / Ö / Ü